



Turn your supply chain from reactive to predictive

With the Market leader in multimodal real-time visibility



The speaker



David Watson

Sales director
Benelux

Wakeo at a glance



Disruption is the **new normal**



60%
of delays



Less capacity
vs pre-covid



480k
missing truckers



Operating in
180+
countries

Wakeo at a glance

The Market Leader in
Multimodal Visibility

Trusted Partner of
Global Leaders

100% Loyalty
since day-1 in 2016

Clients sample



Team

100+ people

Supply Chain specialists: former K+N, Maersk, CMA, Bolloré etc.

Data experts: ex Thalès, IFP, Centrale, Mines-Ponts etc.

Freight forwarding is going digital with WAKEO



AT&L CANADA INC.



Key features



Real-time Tracking & Alerting

- Multimodal tracking
- Predictive ETA
- Automated email alerting

From reactive to predictive



Intelligent Analytics

- Transport performance
- Transit time monitoring
- Demurrage & detention
- Data quality dashboard

Data-driven SC for smarter decisions



Trusted Routes

- Get all services (i.e., vessels, voyage, T/S, etc.) declared by shipping lines in one place
- Check the real performance of ocean schedules by routing, by port, by departure date, or by carrier

Stay tuned on the real performance



Carbon footprint Calculator

- All modes & gases
- GLEC & EN16258 compliant
- Powered by the detailed tracking engine

Reduce the environmental impact



e-Booking

- No more emails & phone calls, automate manual processes
- Reliable & scalable
- Monitor performance

Simplify the booking process

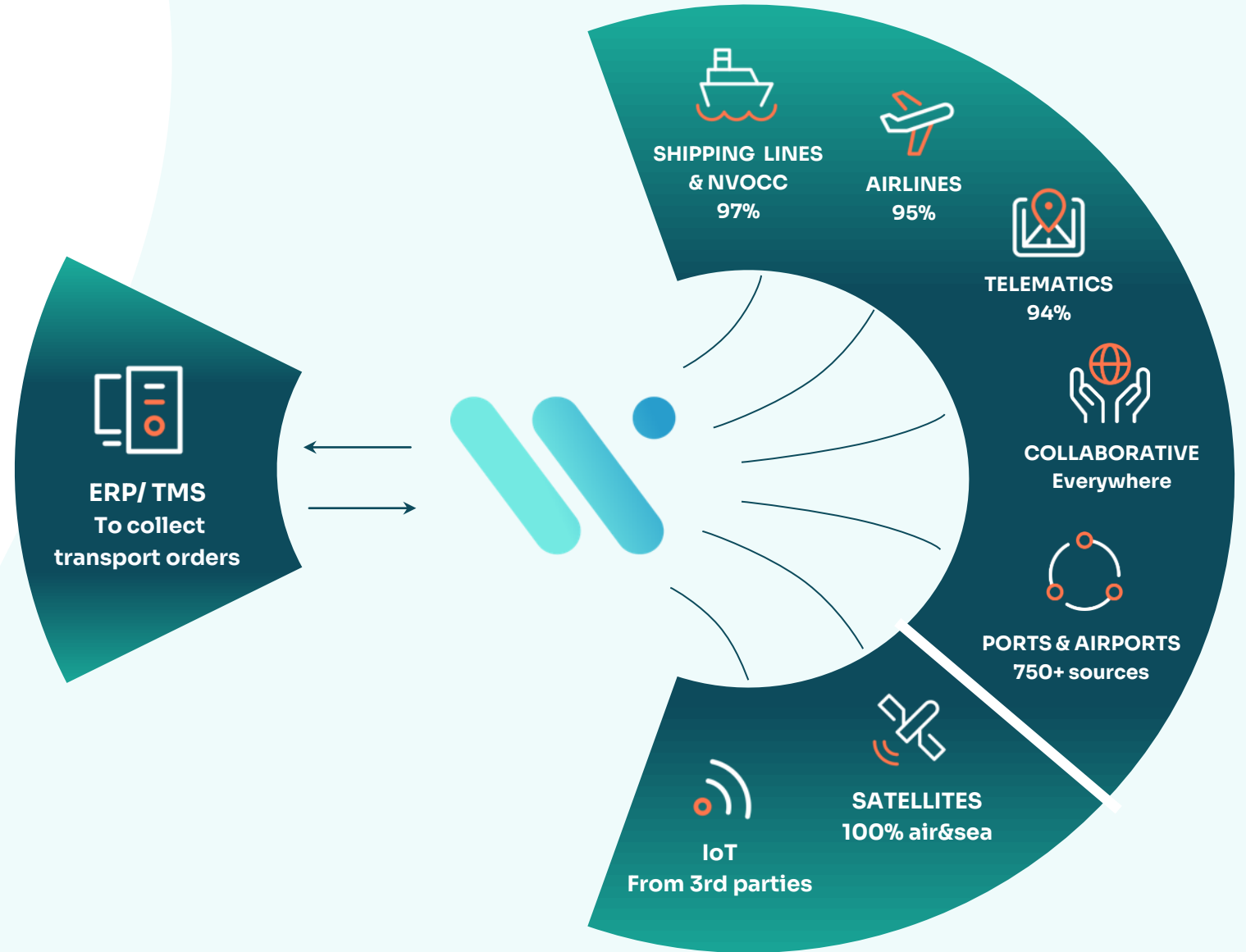
Wakeo's Data



The sources of data

The connected supply chain:
hundreds of datasources coming
from **transport providers** and
independent sources

To fuel the **data engine** with
best-in-class ETAs and
machine learning algorithms





Turn your supply chain
from reactive **to**
predictive



www.wakeo.co



www.linkedin.com/company/wakeo



David.watson@wakeo.co



+31 62848001

